

Huntingdon Primary School

RETURNING TO SCHOOL

Guidance for Parents/Carers

In line with Government guidance, we have made plans to re-open the school from the 1st June for **Reception, Year 1** and **Year 6**. School will still be open for key workers' children and vulnerable children. A thorough Risk Assessment has been completed and approved by the Local Authority.

What we will do to make sure school is safe



We will check for risks before school is open.



If a child or family member is sick they can not come to school.



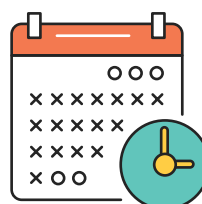
There will be less children in a room together.



Everyone will wash their hands regularly.



Learning spaces will be cleaned regularly.



To do this we will need to make changes to the school day.

If your child is well and in one of the groups asked to attend, they should.
There will be no fines if your child does not go to school.

We are carefully following the guidance from the Local Authority and Public Health Protection Team.

Our staff members will be fully supported to follow the guidance from the Public Health Protection Team. Should they develop coronavirus symptoms they will be asked to self-isolate for 7 days.

Any staff member who lives in a household where there is a suspected case of coronavirus must self-isolate for 14 days.

If any child shows signs of the coronavirus during the school day and we send them home, we will share details with you of how to request a test for your child and we will also inform other members of the Bubble that we have done this. We will seek advice from our local Public Health Protection Team and may decide to 'close' a bubble at short notice. We will only do this if necessary and apologise if this means that childcare becomes a concern for you. However, the safety of our staff and your children is paramount in these decisions. If a child or member of staff within a bubble tests positive for coronavirus, we will inform everyone within the bubble and they will be asked to self-isolate for 14 days.

In the event that a child shows signs of any illness we will exercise caution and ask a parent/carer to collect their child immediately.

Hygiene Measures and Enhanced Cleaning



The school cleaning team has already completed a thorough clean of the building.

- From June 1 there will be additional lunchtime cleaning.
- Extra cleaning materials will be placed in each bubble space and the outside zones for class based and lunchtime staff to use.
- Staff will be briefed on expectations with regard to hygiene measures at school (for staff and pupils on site), including washing hands on arrival, before/after eating and after sneezing/coughing;
- Provision of hand soap and disposable paper towels instead of hand dryers (where practical) in toilets and regular checking of supplies;
- Regular reminders about hand washing and social distancing (e.g. posters in prominent positions);
- Hand sanitiser and tissues available in classrooms and other key locations;
- To maximise ventilation, windows will be opened and doors propped open where safe to do so to encourage natural ventilation.

Enhanced cleaning protocols are in place.

These include:

- Thorough cleaning of classrooms and communal areas at the end of the day;
- Regular cleaning of frequently touched surfaces;
- Bins for tissues emptied regularly during the day;
- Cleaning of play / outdoor equipment between groups;
- Cleaning of other equipment for practical lessons between groups;

- Lunch tables cleaned between groups;
- Removal of unnecessary items from learning environments;
- Removal of soft furnishings, soft toys and toys that are hard to clean.

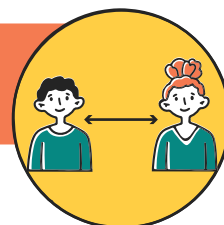
Additional protocols, including provision of PPE, will be followed for cleaning any area where a person with possible or confirmed coronavirus has spent time.



PPE: In line with government guidance, face coverings are not required at school.

A supply of face masks, gloves, aprons and eye protection will be maintained for use as necessary in personal care situations where contact is required, e.g. intimate care needs, provision of first aid or if a child becomes unwell with symptoms of coronavirus at school and requires personal care until they return home. Additional training needs on the use of PPE have been identified with individual staff and training has/is scheduled to take place.

Minimising contact between groups of staff and pupils



The following practices have been put in place:

- One-way circulation (or dividers) in corridors; Accessing rooms directly from outside where possible;
- Staggered break / lunch times;
- Staggered use of staff rooms / office space;
- Limited numbers using toilet facilities at one time;
- Children to be supervised at toilet areas.
- Introduction of drop-off / pick-up protocols that minimise contact;
- Rearrangement of classrooms with sitting positions 2 metres apart (with pupils occupying the

same desk where possible);

- Limited use of shared resources and prevention of sharing stationery and other equipment where possible;
- Consistent groupings of staff / pupils wherever possible with minimal mixing;
- Conducting regular classroom activities outdoors;
- Reduction of unnecessary travel where possible;
- Provision of additional support to children as necessary to follow these measures;
- Emergency evacuation procedures reviewed and adapted to ensure compliance with social distancing rules.

During any face-to-face meetings on site, those involved must observe the 2-metre social distancing rule and meetings will be held outdoors where practical. Only essential visitors are allowed on site with the prior permission of the Headteacher.



Reduction in use of public transport to get to and from school



- Parents / pupils encouraged to walk or cycle to school where this is practical, otherwise asked to follow government guidance on travelling safely;
- If transport providers are used: Transport providers working for the school are expected to follow government guidance on transport, including adherence to hygiene and social distancing rules;
- Staff asked to avoid public transport where possible, otherwise encouraged to wear a non-surgical face mask and wash hands thoroughly on arrival.
- Staff travelling by public transport offered altered start/finish times where operationally feasible to avoid rush hour.

Measures to control these risks will be monitored and undertaken on a daily basis and reported back to the Headteacher.

Elaine Lynch
Headteacher